

City of Alhambra Rainfall: 2011/2012

Official Rainfall Season: October 1st - September 30th

REVISED, as of 4:00 p.m., April 30, 2012

	Oct	Nov	Dec	Jan	Feb	Mar	Apr	May	Jun	Jul	Aug	Sep	Totals
2011/2012 Monthly Rainfall Totals:	2.16	2.31	1.05	4.55	0.89	2.00	1.62						14.58
2010/2011 Monthly Rainfall Totals:	1.32	1.33	14.62	0.88	3.94	4.20	0.00	0.41	0.00	0.00	0.00	0.04	26.74
2009/2010 Monthly Rainfall Totals:	1.46	0.00	3.93	6.85	5.60	0.99	2.15	0.02	0.00	0.00	0.00	0.04	21.04
2008/2009 Monthly Rainfall Totals:	0.00	1.84	3.10	0.83	5.28	0.41	0.03	0.02	0.17	0.00	0.00	0.00	11.68
2007/2008 Monthly Rainfall Totals:	1.10	0.72	3.26	13.54	2.85	0.00	0.05	0.37	0.00	0.00	0.00	0.00	21.89
2006/2007 Monthly Rainfall Totals:	0.03	0.12	0.74	0.26	2.30	0.03	1.02	0.00	0.00	0.04	0.00	2.34	6.88
2005/2006 Monthly Rainfall Totals:	2.10	0.09	1.10	2.80	2.91	3.36	4.39	1.10	0.00	0.00	0.00	0.00	17.85
2004/2005 Monthly Rainfall Totals:	8.21	0.68	7.26	13.85	13.93	2.44	0.94	0.21	0.00	0.00	0.00	0.28	47.80
2003/2004 Monthly Rainfall Totals:	0.00	0.87	2.05	0.38	7.39	1.58	1.02	0.00	0.00	0.00	0.00	0.00	13.29
2002/2003 Monthly Rainfall Totals:	0.00	2.51	3.59	0.00	5.81	4.34	1.60	1.07	0.12	0.03	0.00	0.00	19.07
2001/2002 Monthly Rainfall Totals:	0.05	2.74	1.72	1.39	0.45	0.48	0.17	0.14	0.00	0.00	0.00	0.05	7.19
Historical Monthly Averages:													Seasonal Average:
<u>From 2001/2002 to 2010/2011:</u>	1.43	1.09	4.14	4.08	5.05	1.78	1.14	0.33	0.03	0.01	0.00	0.28	19.34 (01/02-10/11)
<u>From 1927/1928 to 2010/2011:</u>	0.67	1.64	3.11	4.00	4.34	3.06	1.42	0.31	0.08	0.01	0.08	0.30	19.03 (27/28-10/11)

Rainfall Summary Update (all rainfall figures are given in inches)

Current Monthly Rainfall Total to April 30, 2012:	1.62	From April 1, 2012 through 4:00 p.m., April 30, 2012.
2011/2012 Seasonal Total to April 30, 2012:	14.58	From October 1, 2011 through 4:00 p.m., April 30, 2012.
Percent of Last 10 Seasonal Averages (to April 30th):	77.93%	2011/2012 Season (from October 1, 2011 to April 30, 2012).
Percent of 84 Seasonal Averages (to April 30th):	79.93%	2011/2012 Season (from October 1, 2011 to April 30, 2012).

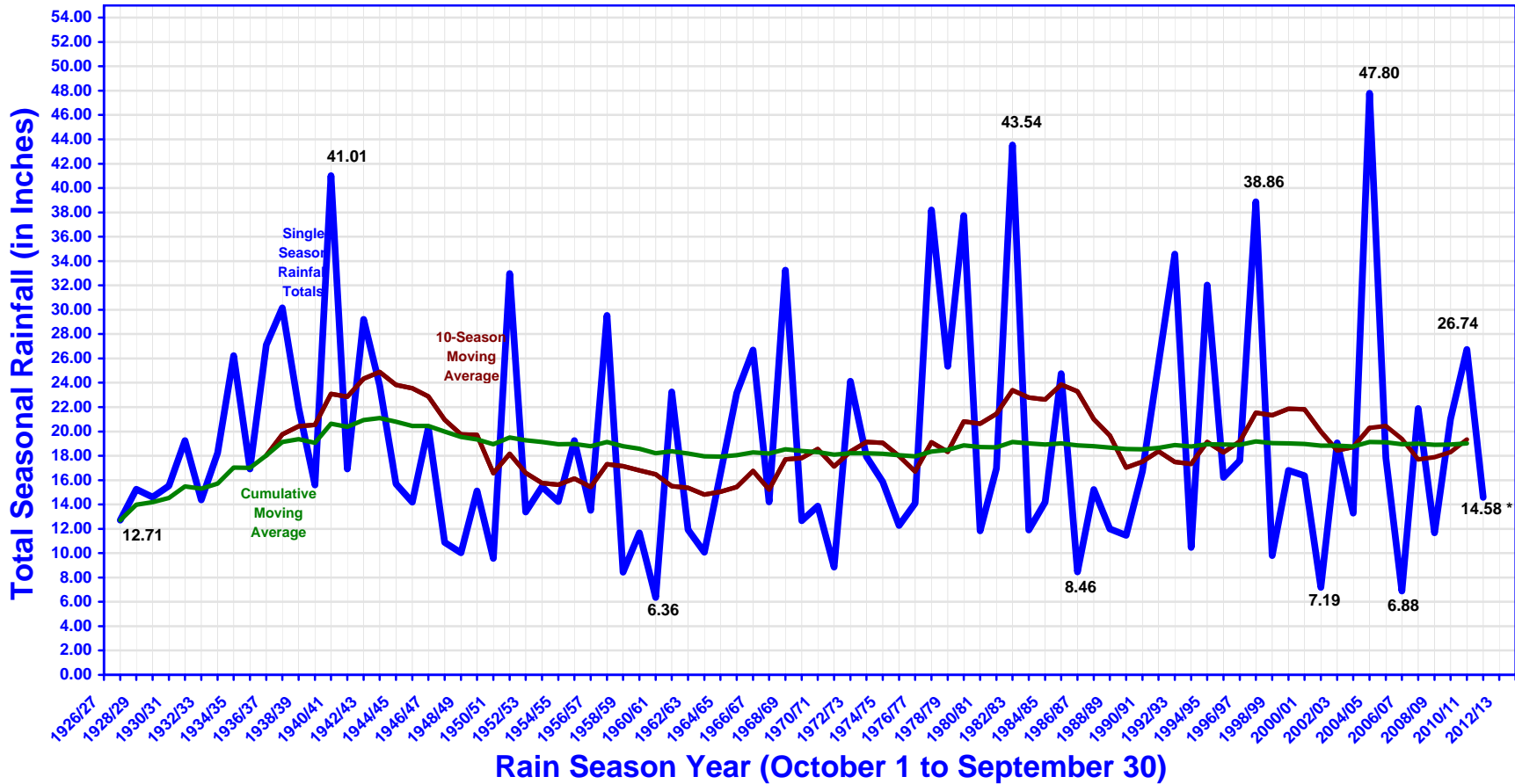
Historical Averages (all rainfall figures are given in inches)

Last Rain Season (2010/2011) to April 30, 2011:	26.29	October 1, 2010 through 4:00 p.m. April 30, 2011.
Historic Monthly Rainfall Average (latest 10 seasons):	1.14	For the month of April (2002-2011).
Historic Monthly Rainfall Average (all 84 seasons):	1.42	For the month of April (1928-2011).
Historic Seasonal Average to April 30th (10 seasons):	18.71	From October 1st through April 30th (2002-2011).
Historic Seasonal Average to April 30th (84 seasons):	18.24	From October 1st through April 30th (1928-2011).
Historical Seasonal Average (latest 10 seasons):	19.34	From October 1, 2001 through September 30, 2011
Historical Seasonal Average (all 84 seasons):	19.03	From October 1, 1927 through September 30, 2011

City of Alhambra - Seasonal Rainfall

1927/28 - 2011/2012 Rain Season Totals

Current
10-Season
Average:
19.34"
Current
84-Season
Average:
19.03"



* This is partial Seasonal Rainfall Total for the 2011/2012 Season from October 1, 2011 to April 30, 2012.