

City of Alhambra Rainfall: 2009/2010

Official Rainfall Season: October 1st - September 30th

REVISED, as of 4:00 p.m., July 31, 2010

	Oct	Nov	Dec	Jan	Feb	Mar	Apr	May	Jun	Jul	Aug	Sep	Totals
2009/2010 Monthly Rainfall Totals:	1.46	0.00	3.74	7.04	5.60	0.99	2.15	0.02	0.00	0.00			21.00
2008/2009 Monthly Rainfall Totals:	0.00	1.84	3.10	0.83	5.28	0.41	0.03	0.02	0.17	0.00	0.00	0.00	11.68
2007/2008 Monthly Rainfall Totals:	1.10	0.72	3.26	13.54	2.85	0.00	0.05	0.37	0.00	0.00	0.00	0.00	21.89
2006/2007 Monthly Rainfall Totals:	0.03	0.12	0.74	0.26	2.30	0.03	1.02	0.00	0.00	0.04	0.00	2.34	6.88
2005/2006 Monthly Rainfall Totals:	2.10	0.09	1.10	2.80	2.91	3.36	4.39	1.10	0.00	0.00	0.00	0.00	17.85
2004/2005 Monthly Rainfall Totals:	8.21	0.68	7.26	13.85	13.93	2.44	0.94	0.21	0.00	0.00	0.00	0.28	47.80
2003/2004 Monthly Rainfall Totals:	0.00	0.87	2.05	0.38	7.39	1.58	1.02	0.00	0.00	0.00	0.00	0.00	13.29
2002/2003 Monthly Rainfall Totals:	0.00	2.51	3.59	0.00	5.81	4.34	1.60	1.07	0.12	0.03	0.00	0.00	19.07
2001/2002 Monthly Rainfall Totals:	0.05	2.74	1.72	1.39	0.45	0.48	0.17	0.14	0.00	0.00	0.00	0.05	7.19
2000/2001 Monthly Rainfall Totals:	1.34	0.00	0.00	3.84	8.61	0.62	1.91	0.00	0.00	0.05	0.00	0.00	16.37
1999/2000 Monthly Rainfall Totals:	0.00	0.24	0.21	1.03	9.18	3.15	2.98	0.00	0.00	0.00	0.00	0.00	16.79

Historical Monthly Averages:													Seasonal Average:
<u>From 1999/2000 to 2008/2009:</u>	1.28	0.98	2.30	3.79	5.87	1.64	1.41	0.29	0.03	0.01	0.00	0.27	17.88 (99/00-08/09)
<u>From 1927/1928 to 2008/2009:</u>	0.65	1.66	2.96	4.01	4.33	3.07	1.43	0.31	0.08	0.01	0.08	0.31	18.91 (27/28-08/09)

Rainfall Summary Update (all rainfall figures are given in inches)

Current Monthly Rainfall Total to July 31, 2010:	0.00	From June 1, 2010 through 4:00 p.m., July 31, 2010.
2009/2010 Seasonal Total to July 31, 2010:	21.00	From October 1, 2009 through 4:00 p.m., July 31, 2010.
Percent of Last 10 Seasonal Averages (to July 31st):	119.28%	2009/2010 Season (from October 1, 2009 to July 31, 2010).
Percent of 82 Seasonal Averages (to July 31st):	113.45%	2009/2010 Season (from October 1, 2009 to July 31, 2010).

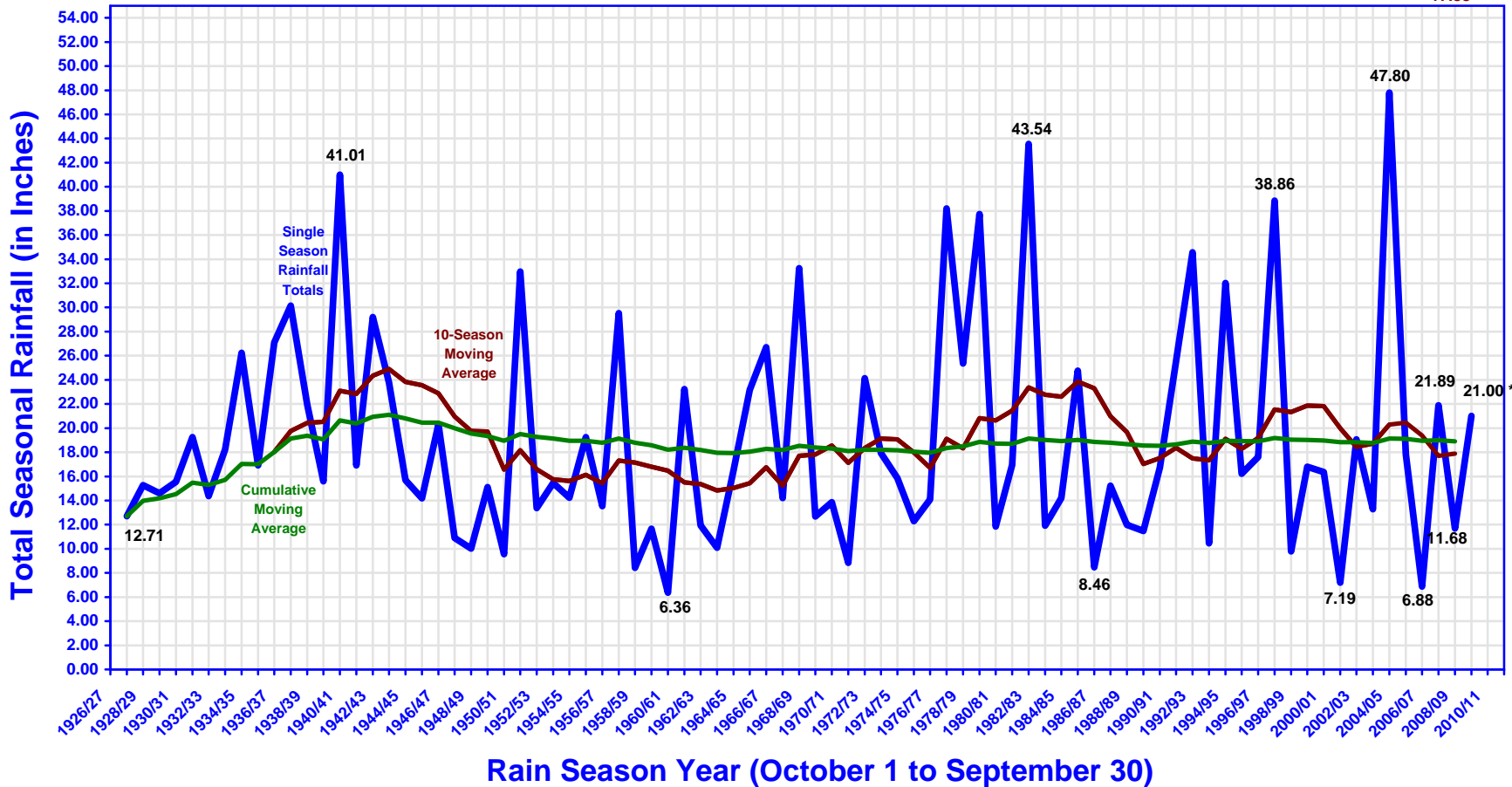
Historical Averages (all rainfall figures are given in inches)

Last Rain Season (2008/2009) to July 31, 2009:	11.68	October 1, 2008 through 4:00 p.m., July 31, 2009.
Historic Monthly Rainfall Average (latest 10 seasons):	0.01	For the month of July (2000-2009).
Historic Monthly Rainfall Average (all 82 seasons):	0.01	For the month of July (1928-2009).
Historic Seasonal Average to July 31st (10 seasons):	17.61	From October 1st. through July 31st (2000-2009).
Historic Seasonal Average to July 31st (82 seasons):	18.51	From October 1st. through July 31st (1928-2009).
Historical Seasonal Average (latest 10 seasons):	17.88	From October 1, 1999 through September 30, 2009
Historical Seasonal Average (all 82 seasons):	18.91	From October 1, 1927 through September 30, 2009

City of Alhambra - Seasonal Rainfall

1927/28 - 2009/2010 Rain Season Totals

Current
82-Season
Average:
18.91"
Current
10-Season
Average:
17.88"



* This is a partial Seasonal Rainfall Total for the 2009/2010 Season, through 4:00 p.m., July 31, 2010.