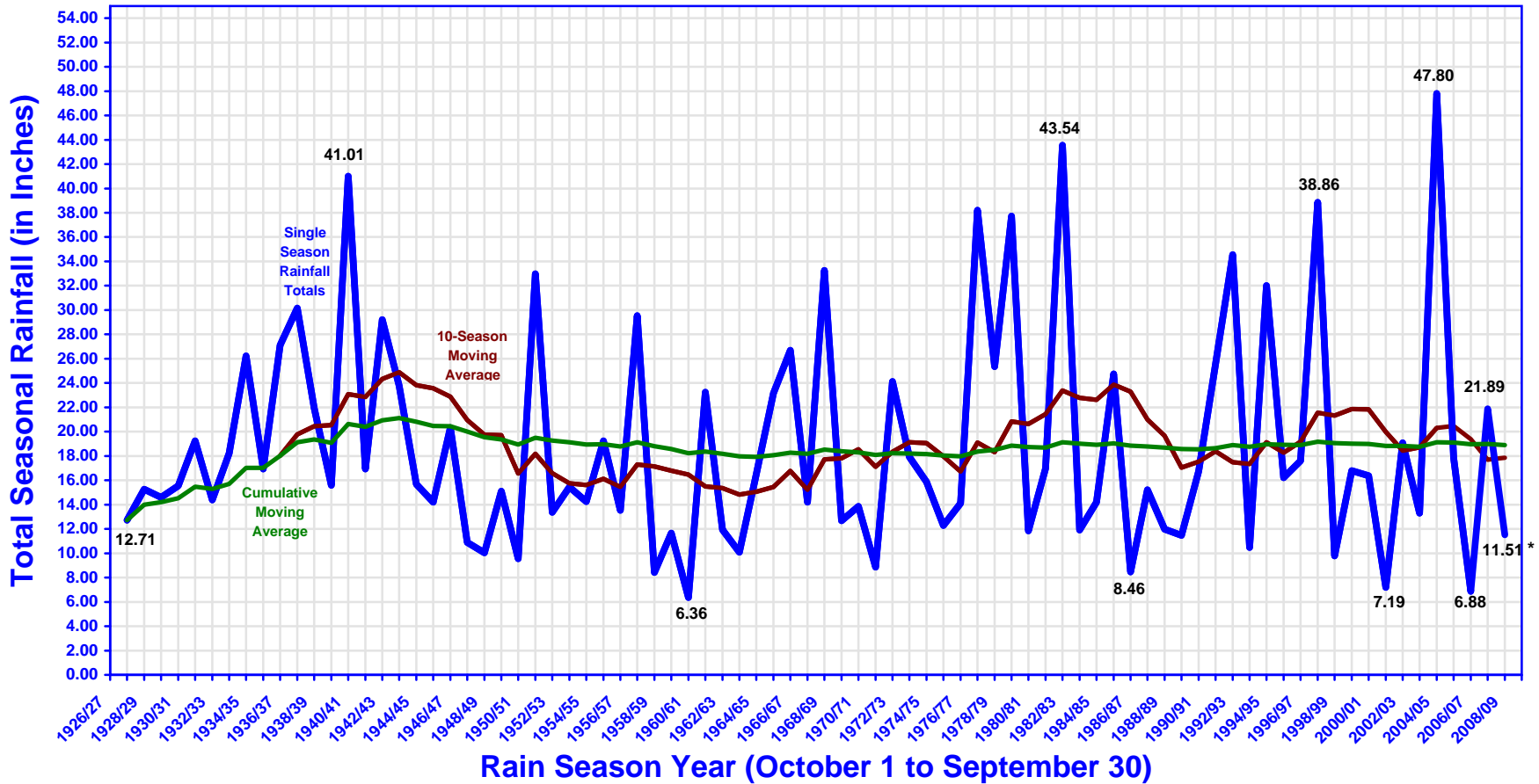


# City of Alhambra - Seasonal Rainfall

## 1927/28 - 2008/2009 Rain Season Totals

Current  
10-Season  
Average:  
17.69"

Current  
81-Season  
Average:  
19.00"



\* This is a partial Seasonal Rainfall Total for the 2008/2009 Season, through 4:00 p.m., May 31, 2009.

# City of Alhambra Rainfall: 2008/2009

Official Rainfall Season: October 1st - September 30th

REVISED, as of 4:00 p.m., May 31, 2009

	Oct	Nov	Dec	Jan	Feb	Mar	Apr	May	Jun	Jul	Aug	Sep	Totals
<b>2008/2009 Monthly Rainfall Totals:</b>	<b>0.00</b>	<b>1.84</b>	<b>3.10</b>	<b>0.83</b>	<b>5.28</b>	<b>0.41</b>	<b>0.03</b>	<b>0.02</b>					<b>11.51</b>
2007/2008 Monthly Rainfall Totals:	1.10	0.72	3.26	13.54	2.85	0.00	0.05	0.37	0.00	0.00	0.00	0.00	21.89
2006/2007 Monthly Rainfall Totals:	0.03	0.12	0.74	0.26	2.30	0.03	1.02	0.00	0.00	0.04	0.00	2.34	6.88
2005/2006 Monthly Rainfall Totals:	2.10	0.09	1.10	2.80	2.91	3.36	4.39	1.10	0.00	0.00	0.00	0.00	17.85
2004/2005 Monthly Rainfall Totals:	8.21	0.68	7.26	13.85	13.93	2.44	0.94	0.21	0.00	0.00	0.00	0.28	47.80
2003/2004 Monthly Rainfall Totals:	0.00	0.87	2.05	0.38	7.39	1.58	1.02	0.00	0.00	0.00	0.00	0.00	13.29
2002/2003 Monthly Rainfall Totals:	0.00	2.51	3.59	0.00	5.81	4.34	1.60	1.07	0.12	0.03	0.00	0.00	19.07
2001/2002 Monthly Rainfall Totals:	0.05	2.74	1.72	1.39	0.45	0.48	0.17	0.14	0.00	0.00	0.00	0.05	7.19
2000/2001 Monthly Rainfall Totals:	1.34	0.00	0.00	3.84	8.61	0.62	1.91	0.00	0.00	0.05	0.00	0.00	16.37
1999/2000 Monthly Rainfall Totals:	0.00	0.24	0.21	1.03	9.18	3.15	2.98	0.00	0.00	0.00	0.00	0.00	16.79
1998/1999 Monthly Rainfall Totals:	0.00	1.53	0.45	2.04	0.92	1.16	2.57	0.13	0.99	0.00	0.00	0.00	9.79
<b>Historical Monthly Averages:</b>													<b>Seasonal Average:</b>
<u>From 1998/1999 to 2007/2008:</u>	1.28	0.95	2.04	3.91	5.44	1.72	1.67	0.30	0.11	0.01	0.00	0.27	17.69 (98/99-07/08)
<u>From 1927/1928 to 2007/2008:</u>	0.66	1.66	2.96	4.05	4.32	3.10	1.44	0.32	0.08	0.01	0.09	0.32	19.00 (27/28-07/08)

## Rainfall Summary Update (all rainfall figures are given in inches)

<b>Current Monthly Rainfall Total to May 31, 2009:</b>	<b>0.02</b>	<b>From May 1, 2009 through 4:00 p.m., May 31, 2009.</b>
<b>2008/2009 Seasonal Total to May 31, 2009:</b>	<b>11.51</b>	<b>From October 1, 2008 through 4:00 p.m., May 31, 2009.</b>
<b>Percent of Last 10 Seasonal Averages (to May 31st):</b>	<b>66.52%</b>	<b>2008/2009 Season (from October 1, 2008 to May 31, 2009).</b>
<b>Percent of 81 Seasonal Averages (to May 31st):</b>	<b>62.18%</b>	<b>2008/2009 Season (from October 1, 2008 to May 31, 2009).</b>

## Historical Averages (all rainfall figures are given in inches)

<b>Last Rain Season (2007/2008) to May 31, 2008:</b>	<b>21.89</b>	<b>October 1, 2007 through 4:00 p.m., May 31, 2008.</b>
<b>Historic Monthly Rainfall Average (latest 10 seasons):</b>	<b>0.30</b>	<b>For the month of May (1999-2008).</b>
<b>Historic Monthly Rainfall Average (all 81 seasons):</b>	<b>0.32</b>	<b>For the month of May (1928-2008).</b>
<b>Historic Seasonal Average to May 31st (10 seasons):</b>	<b>17.30</b>	<b>From December 1st. through May 31st (1999-2008).</b>
<b>Historic Seasonal Average to May 31st (81 seasons):</b>	<b>18.51</b>	<b>From December 1st. through May 31st (1928-2008).</b>
<b>Historical Seasonal Average (latest 10 seasons):</b>	<b>17.69</b>	<b>From October 1, 1998 through September 30, 2008</b>
<b>Historical Seasonal Average (all 81 seasons):</b>	<b>19.00</b>	<b>From October 1, 1927 through September 30, 2008</b>